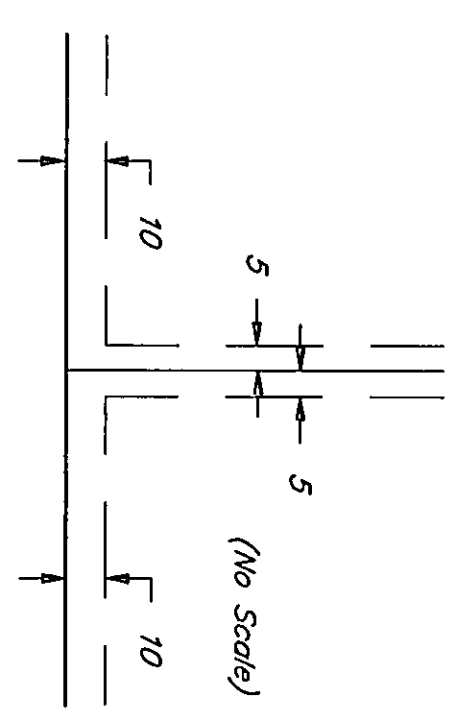
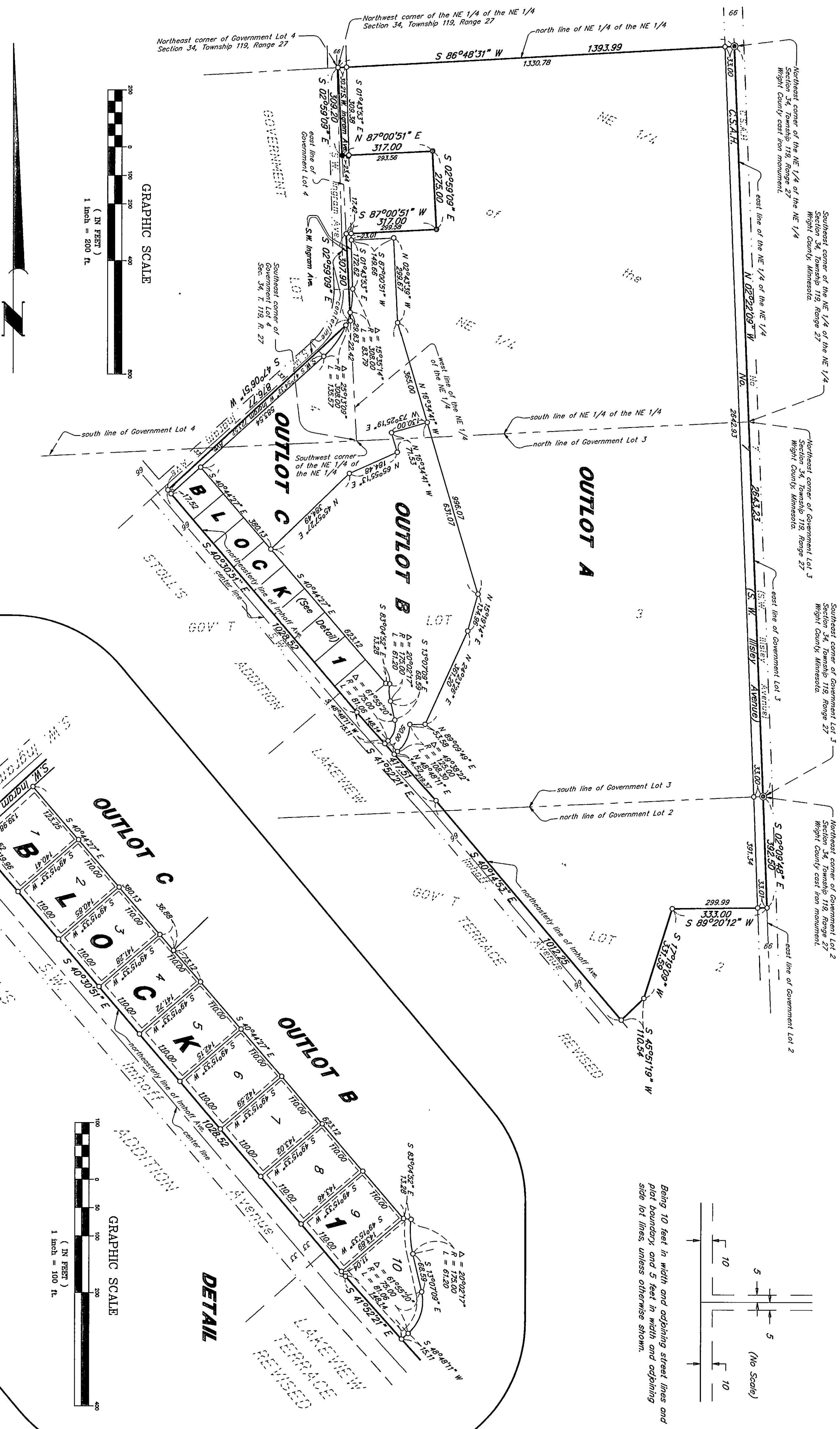


LAKE GOLF ESTATES

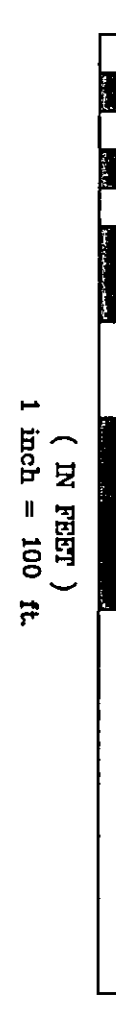
Drainage and Utility Easements are shown thus:



Being 10 feet in width and adjoining street lines and plat boundary and 5 feet in width and adjoining side lot lines, unless otherwise shown.



GRAPHIC SCALE
(IN FEET)
1 inch = 200 ft.



GRAPHIC SCALE
(IN FEET)
1 inch = 100 ft.

DETAIL

Bearings are based on assumed data.
 O Denotes 1/2 inch O.D. x 15 inch record set
 ● Denotes iron monument found