

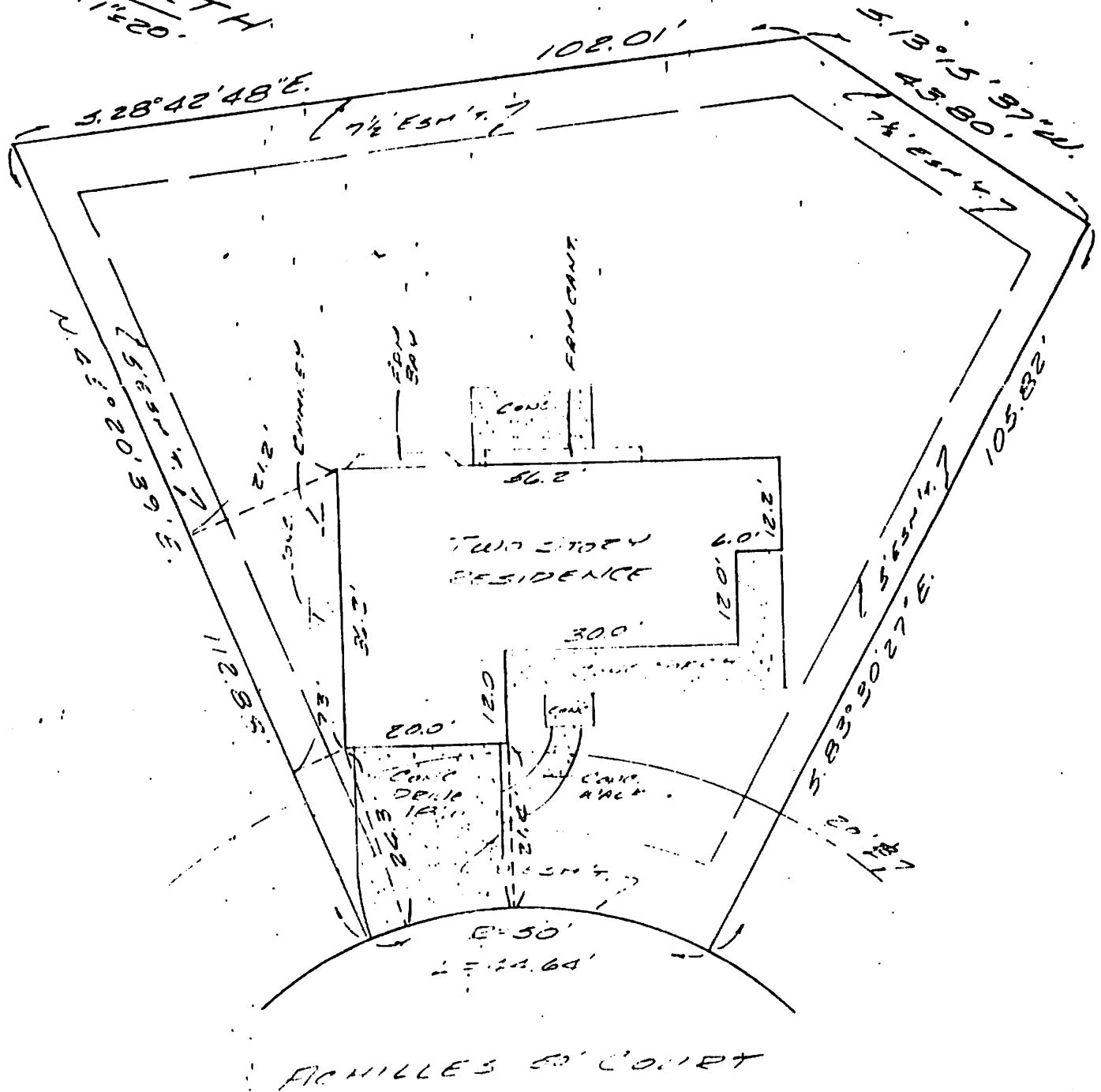
M. Adams

LOT 253

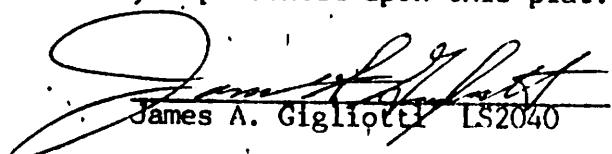
PEGASUS FARMS PLAT TWO

T.46N., R.4E., ST. CHARLES CO., MO.

NORTH
SCALE: 1"=20'

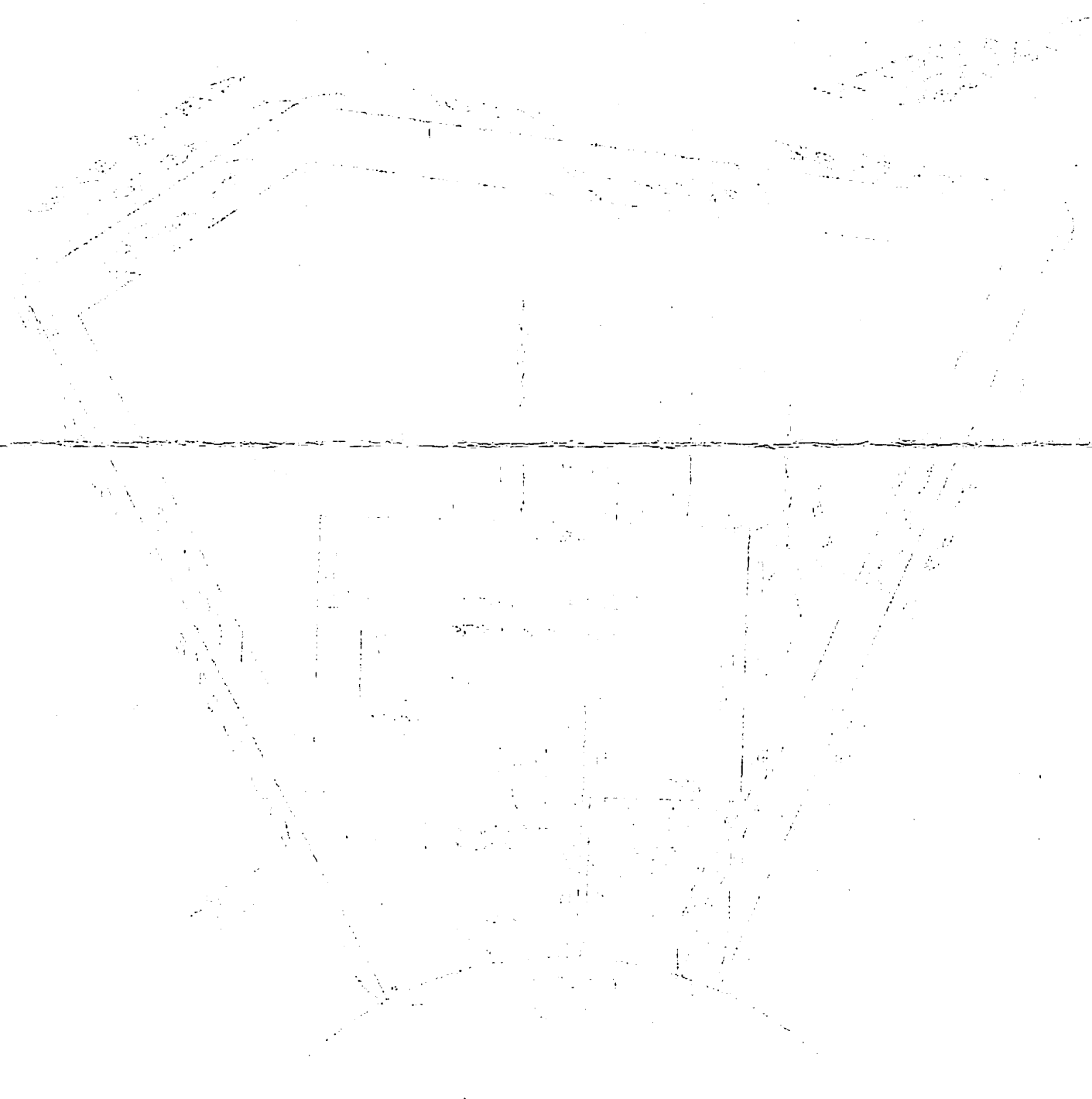


This is to certify that at the request of
HILLMAN HOMES, we have during
FEB, 1988 made a survey of the
 improvements as shown, and that the results
 are correctly represented upon this plat.

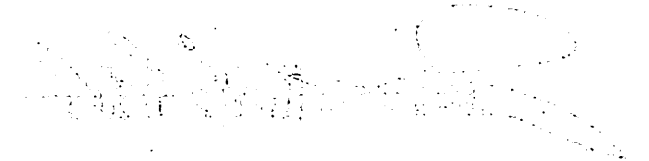

 James A. Gigliotti LS2040

NOTE: No property corners established by this survey.
 Boundary and easements shown per recorded plat.

Handwritten text at the top of the page, possibly a title or header, which is mostly illegible due to fading and bleed-through.



Handwritten text block located below the main drawing, containing several lines of illegible text.



Handwritten text block at the bottom of the page, likely a signature or a note, which is mostly illegible.